

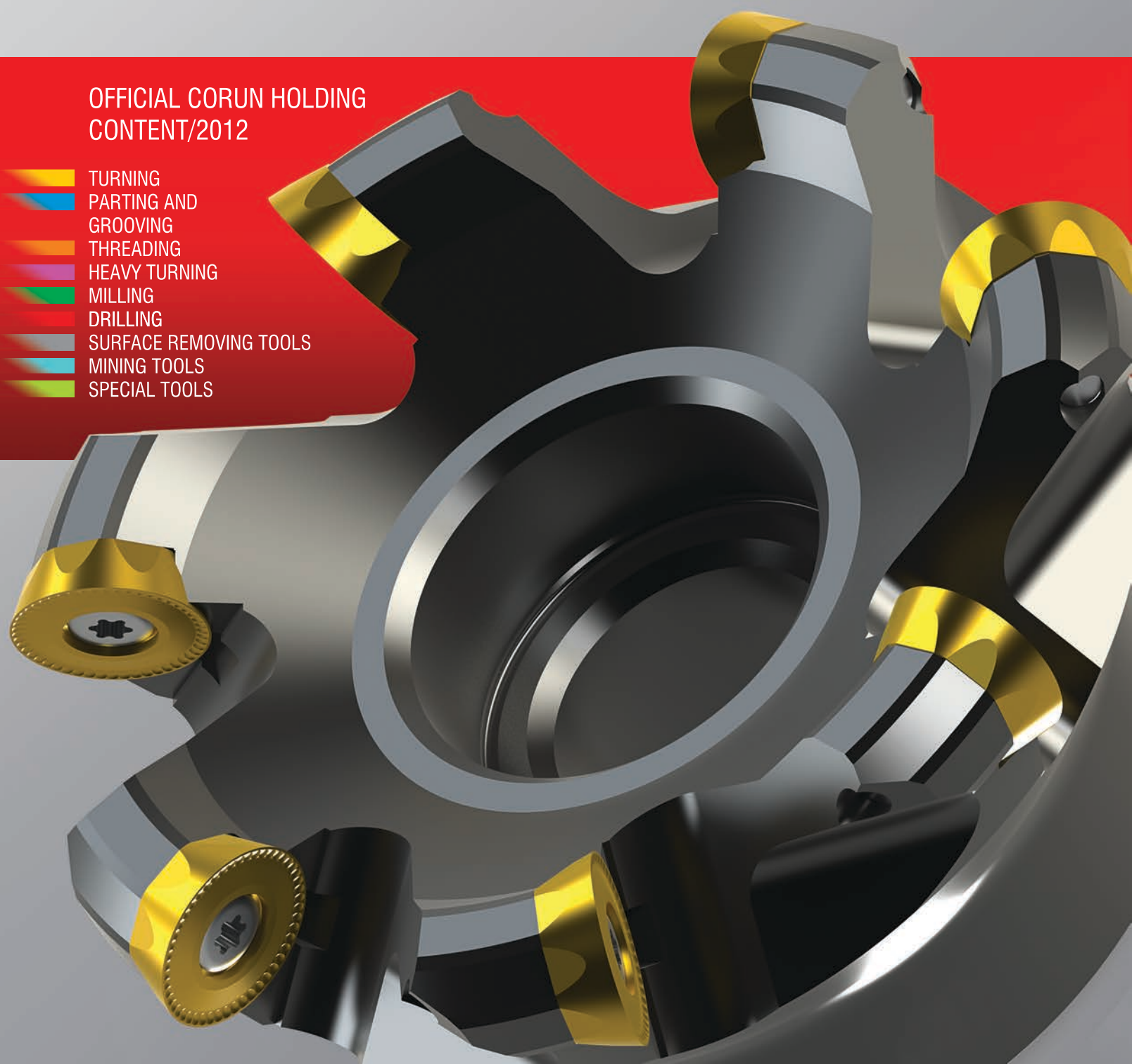


CATALOGUE/2012

THE COMPLETE RANGE OF PRODUCTS

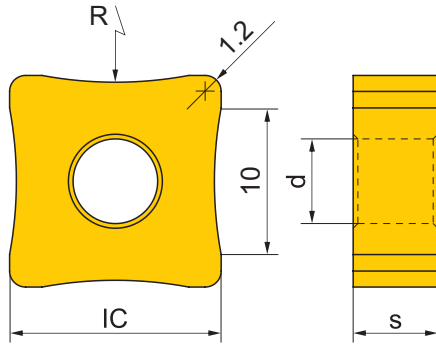
OFFICIAL CORUN HOLDING
CONTENT/2012

-  TURNING
-  PARTING AND GROOVING
-  THREADING
-  HEAVY TURNING
-  MILLING
-  DRILLING
-  SURFACE REMOVING TOOLS
-  MINING TOOLS
-  SPECIAL TOOLS



I.a Inserts for external weld removing

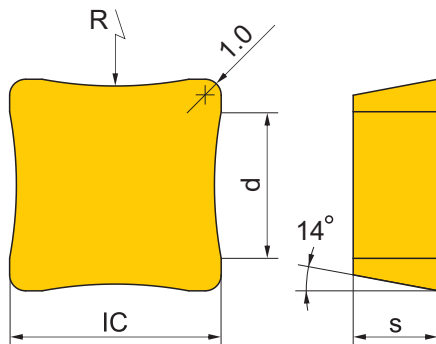
S-MAX



Dimensions	IC	d	s	R
15	15.875	5.16	6.35	9.5 - 50.0
...UX 19	19.050	7.92	6.35	50.0 - 150.0
...MX 19	19.050	6.35	6.35	50.0 - 150.0

P		M		K	
CVD		CVD		CVD	
3C15	P15	2C15	M15	3C15	K15
4C15	P15	2C25	M25	4C15	K15
4C25	P25	4C25	M25	4C25	K25
4C35	P35	4C35	M35	4C25	K25
				K13A	K20

S-MAX	IC	Ordering code
15	SNUX 150612	
19	SNUX 190608	
19	SNMX 190608	



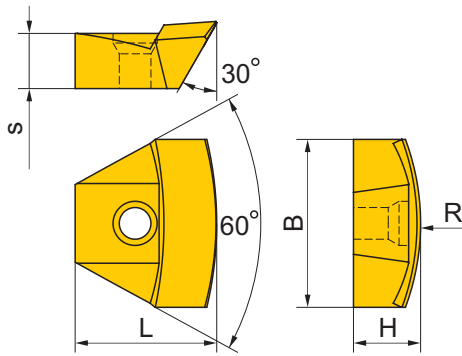
Dimensions	IC	d	s	R
19	19.000	14.0	5.00	15.0 - 55.0

P		M		K	
CVD		CVD		CVD	
3C15	P15	2C25	M25	3C15	K15
4C15	P15	4C25	M25	4C15	K15
4C25	P25	4C35	M35	4C25	K25
4C35	P35			K13A	K20

S-MAX	IC	Ordering code
19	SOUX 190400-R15	
	SOUX 190400-R20	
	SOUX 190400-R25	
	SOUX 190400-R35	
	SOUX 190400-R45	
	SOUX 190400-R55	

I.a Inserts for internal weld removing

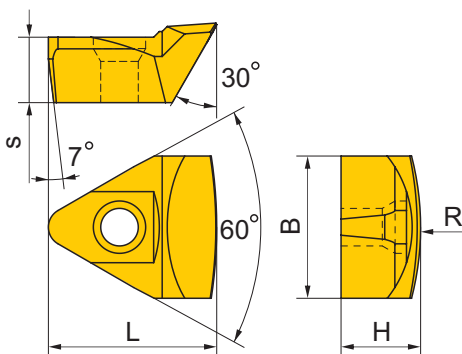
S-MAX



Dimensions	B	H	s	L	R
...-50	35.0	14.0	11.5	29.5	50
...-70	35.0	14.0	11.5	29.5	70

P		M		K	
CVD		CVD		CVD	
3C15	P15	2C15	M15	3C15	K15
4C15	P15	2C25	M25	4C15	K15
4C25	P25	4C25	M25	4C25	K25
4C35	P35	4C35	M35	4C25	K25

S-MAX	Ordering code	3C15	P15	4C15	P15	4C25	P25	4C35	P35	2C15	M15	2C25	M25	4C25	M25	4C35	M35	3C15	K15	4C15	K15	4C25	K25	K13A	K20
35	CD-2000-004-00-50					●						●													
	CD-2000-004-00-70					●						●													



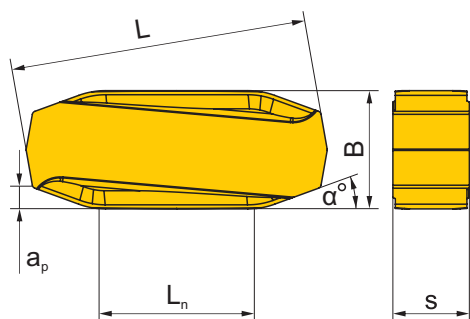
Dimensions	B	H	s	L	R
...-35	25.0	14.0	11.5	29.5	35
...-50	25.0	14.0	11.5	29.5	50

P		M		K	
CVD		CVD		CVD	
3C15	P15	2C15	M15	3C15	K15
4C15	P15	2C25	M25	4C15	K15
4C25	P25	4C25	M25	4C25	K25
4C35	P35	4C35	M35	4C25	K25

S-MAX	Ordering code	3C15	P15	4C15	P15	4C25	P25	4C35	P35	2C15	M15	2C25	M25	4C25	M25	4C35	M35	3C15	K15	4C15	K15	4C25	K25	K13A	K20
25	CD-2000-005-00-35					●						●													
	CD-2000-005-00-50					●						●													

I.b Inserts for pipes calibration

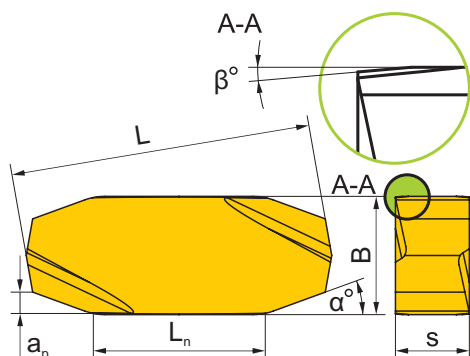
S-MAX



Dimensions	B	L	s	L _n	a _p	α°
...UC-18	18.0	37.0	12.000	20.0	2.0	20
...UG-18	18.0	37.0	12.500	20.7	2.7	15

P			M			K	
CVD			CVD			CVD	
3C15	P15		2C15	M15		3C15	K15
4C15	P15		2C25	M25		4C15	K15
4C25	P25		4C25	M25		4C25	K25
4C35	P35		4C35	M35		K13A	K20

S-MAX	Ordering code
18 LPUC 182020	
18 LPUG 182020	



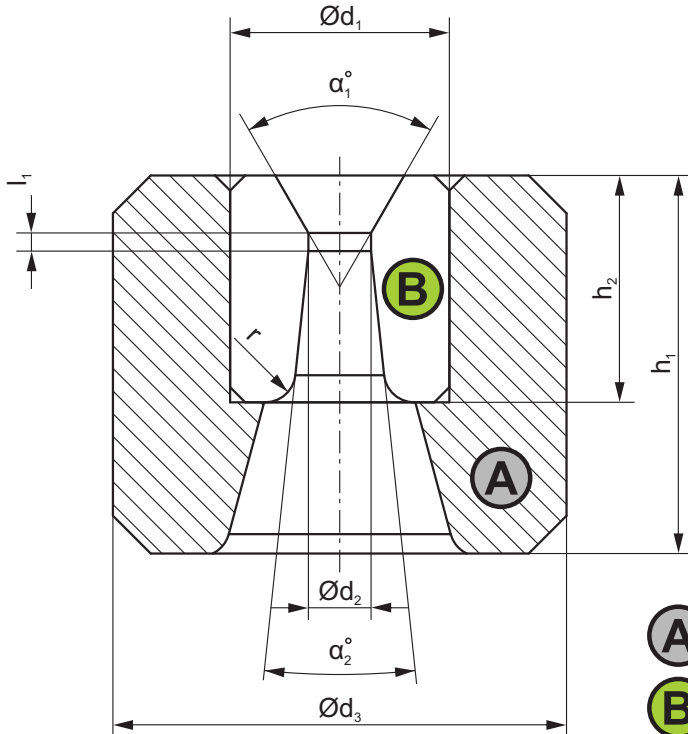
Dimensions	B	L	s	L _n	a _p	α°	β°
ZNGF ...-6F	12.0	30.5	7.500	15	2.3	20	5
ZNGF ...	12.0	30.5	7.500	16	2.3	20	-

P			M			K	
CVD			CVD			CVD	
3C15	P15		2C15	M15		3C15	K15
4C15	P15		2C25	M25		4C15	K15
4C25	P25		4C25	M25		4C25	K25
4C35	P35		4C35	M35		K13A	K20

S-MAX	Ordering code
ZNGF 0507NER-6F	
ZNGF 0507NER	

I.c Dies for drawing of wires and dies for straightening of wires

Dies for drawing of wires

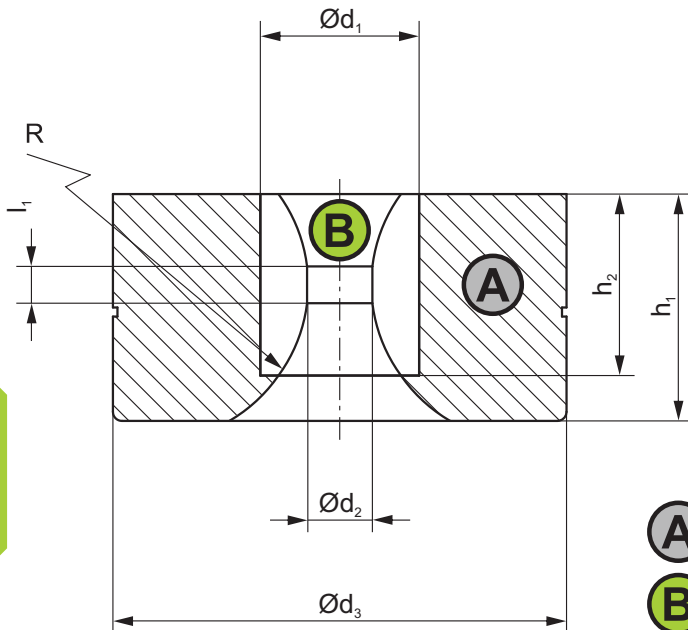


- (A) Steel holder
- (B) Hard metal insertion

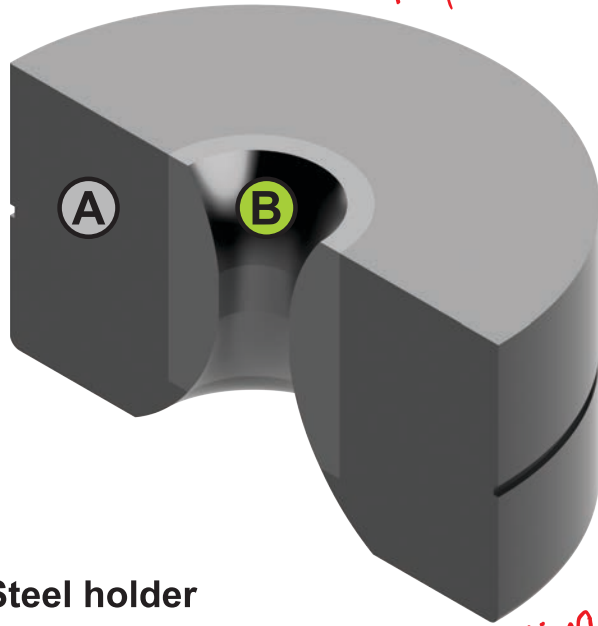


Dimension according to the customer request!

Dies for straightening of wires



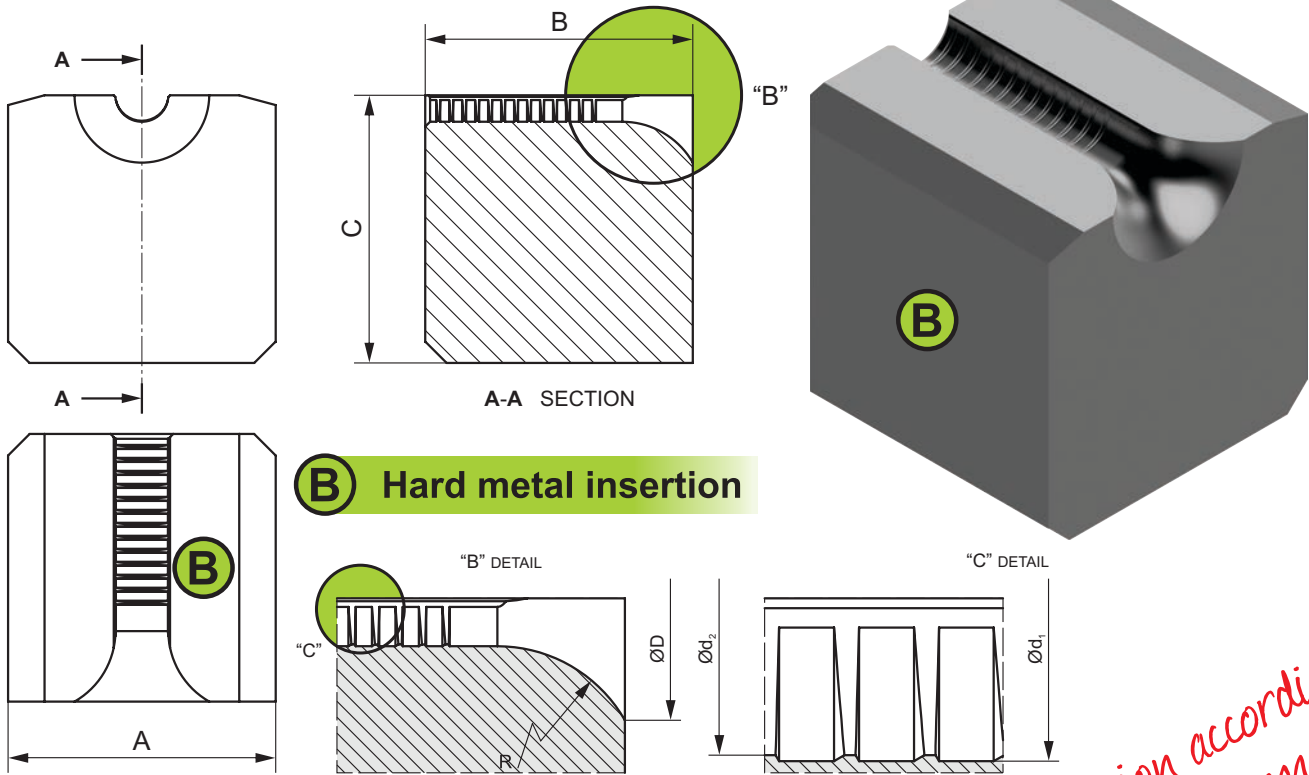
- (A) Steel holder
- (B) Hard metal insertion



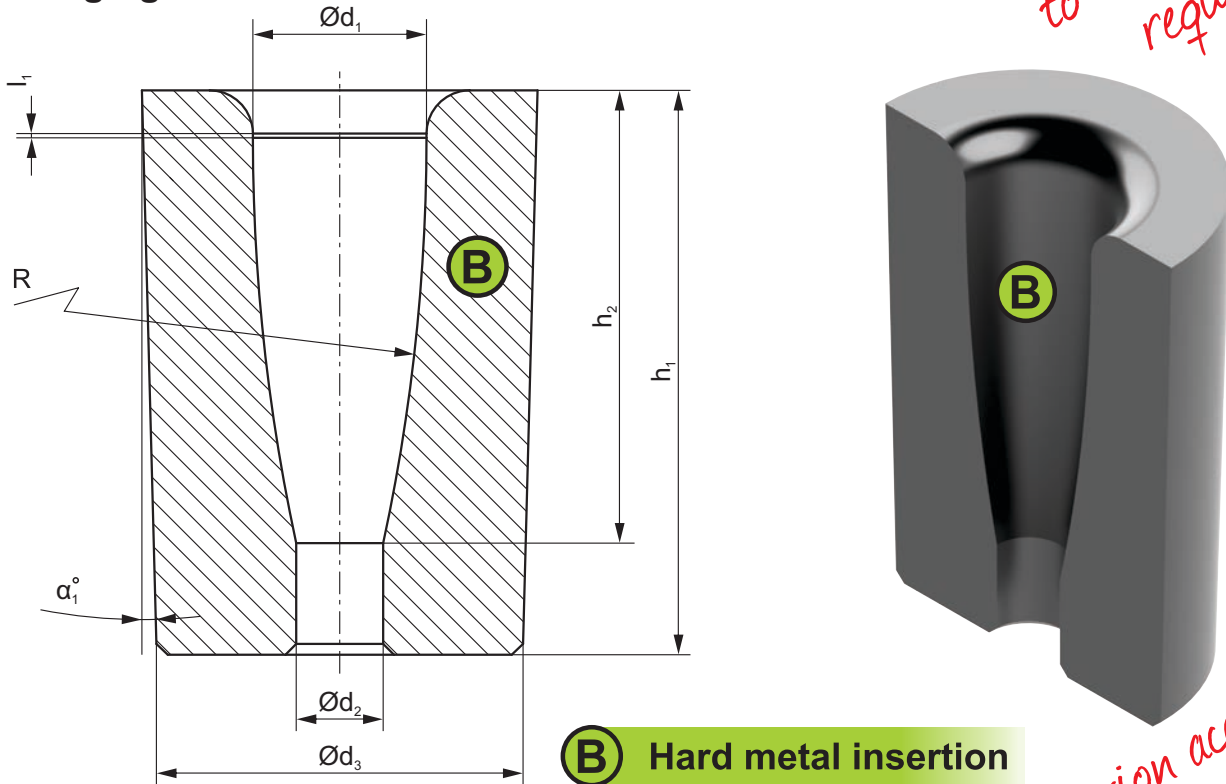
Dimension according to the customer request!

I.d Dies for nail and forging dies

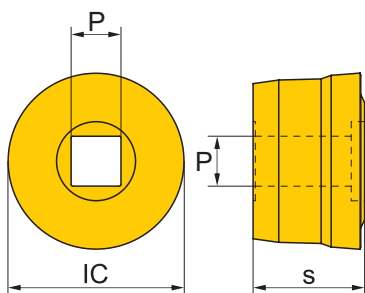
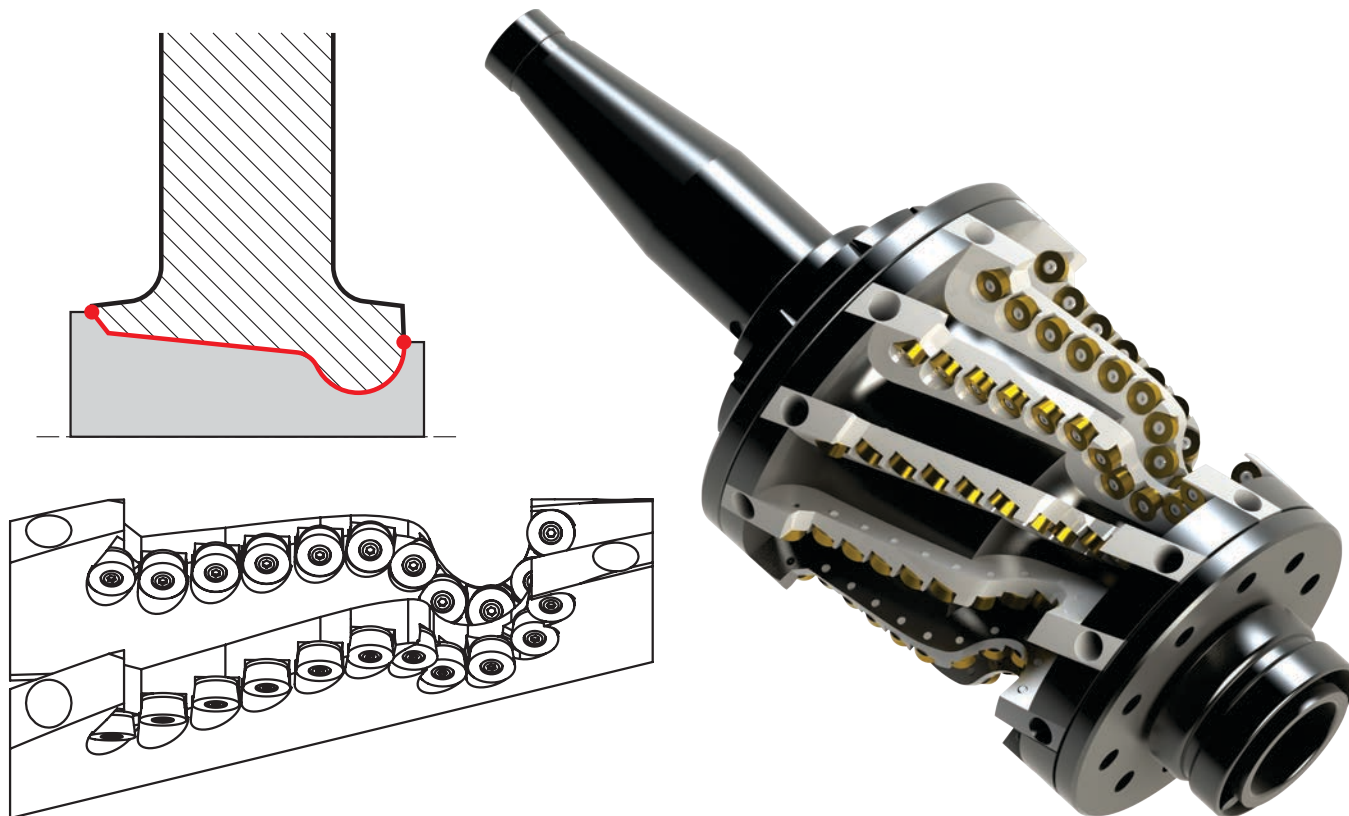
Dies for nail



Forging dies



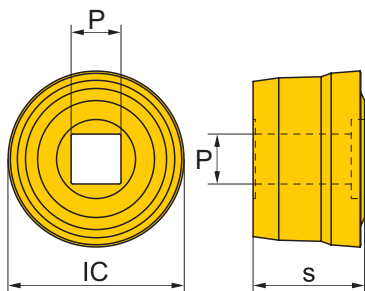
I.e Special cutter for rail and locomotive wheels reparation



Dimensions	IC	P	s			
16	15.800	4.48	9.6			

P		M		K	
CVD		CVD		CVD	
3C15	P15	2C25	M15	3C15	K15
4C15	P15	2C25	M25	4C15	K15
4C25	P25	4C25	M25	4C25	K25
4C35	P35	2C15	M15	3C15	K15
2C15	M15	4C25	M25	4C35	M35
2C25	M25	4C25	M25	4C35	M35
4C25	M25	3C15	K15	4C15	K15
4C35	M35	4C15	K15	4C25	K25
3C15	K15	4C25	K25	K13A	K20
4C15	K15				
4C25	K25				
K13A	K20				

S-MAX	IC	Ordering code	3C15	P15	4C15	P15	4C25	P25	4C35	P35	2C15	M15	2C25	M25	4C25	M25	4C35	M35	3C15	K15	4C15	K15	4C25	K25	K13A	K20
16	RBMA	161000					●	○					●	○					●	○	●	○				



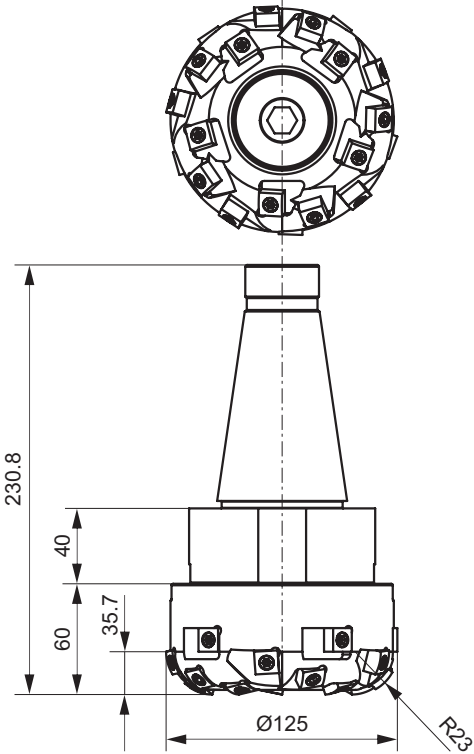
Dimensions	IC	P	s			
16	15.800	4.48	9.6			

P		M		K	
CVD		CVD		CVD	
3C15	P15	2C25	M15	3C15	K15
4C15	P15	2C25	M25	4C15	K15
4C25	P25	4C25	M25	4C25	K25
4C35	P35	2C15	M15	3C15	K15
2C15	M15	4C25	M25	4C35	M35
2C25	M25	4C25	M25	4C35	M35
4C25	M25	3C15	K15	4C15	K15
4C35	M35	4C15	K15	4C25	K25
3C15	K15	4C25	K25	K13A	K20
4C15	K15				
4C25	K25				
K13A	K20				

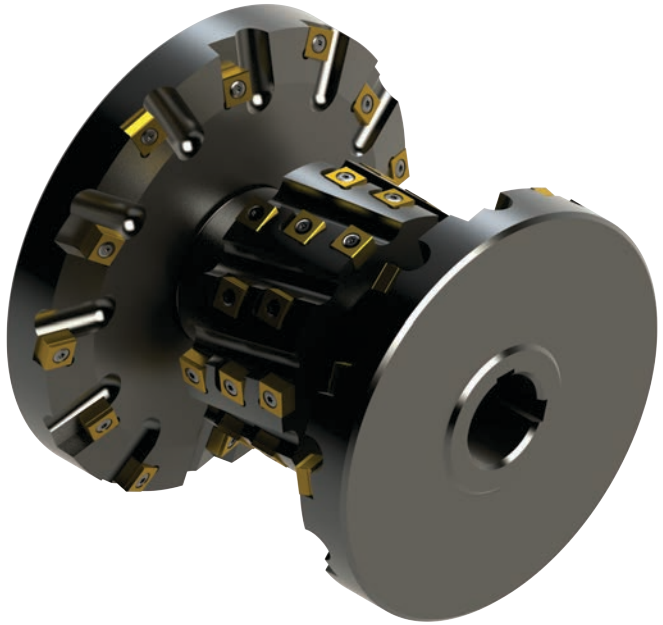
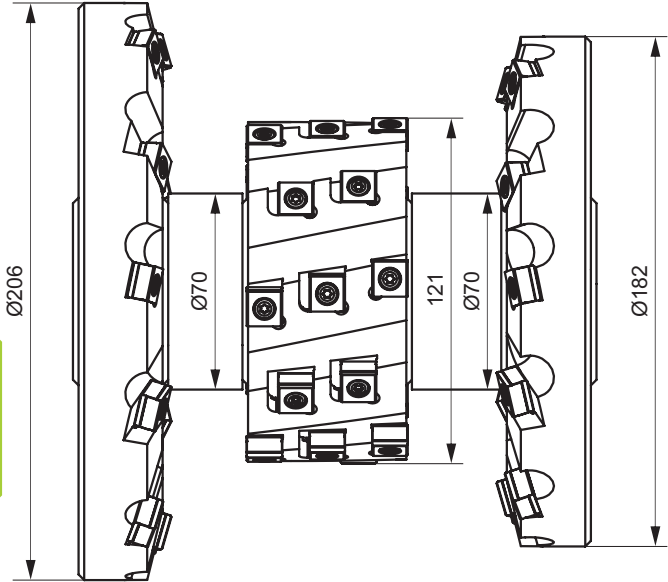
S-MAX	IC	Ordering code	3C15	P15	4C15	P15	4C25	P25	4C35	P35	2C15	M15	2C25	M25	4C25	M25	4C35	M35	3C15	K15	4C15	K15	4C25	K25	K13A	K20
16	RBMM	161000					●	○					●	○					●	○	●	○				

I.e Special tools

MR290L-C200R06SN12-R23-355

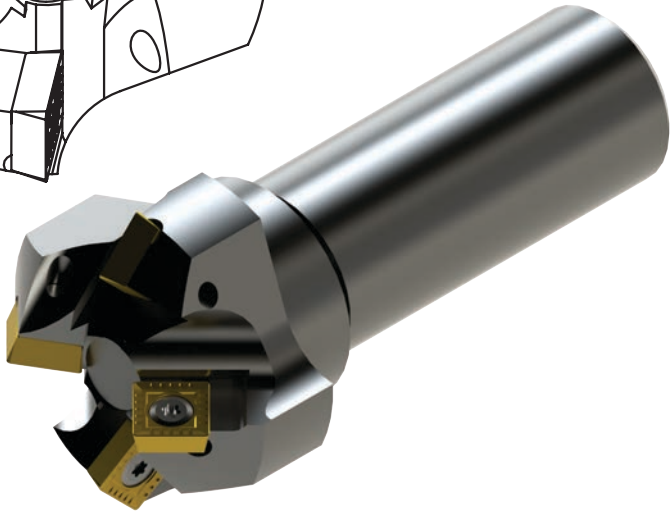
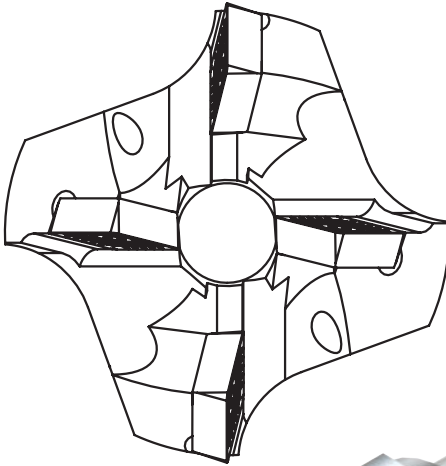
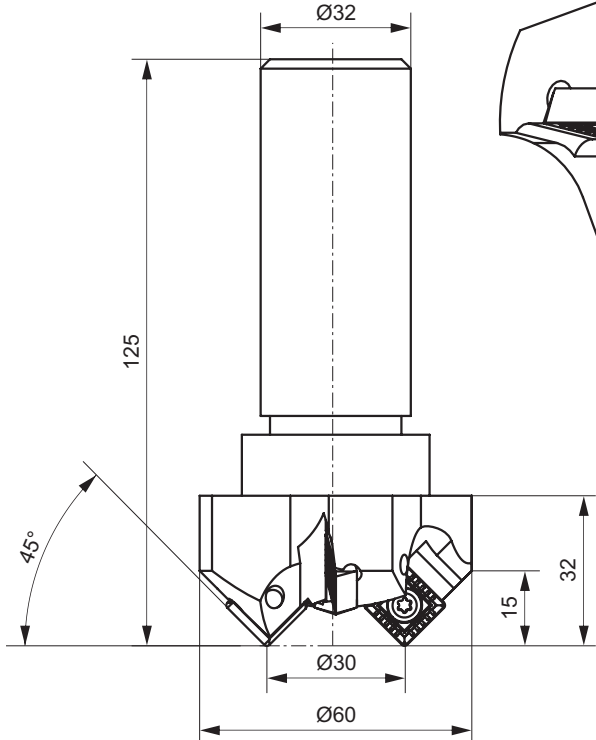


CD-S.09.03

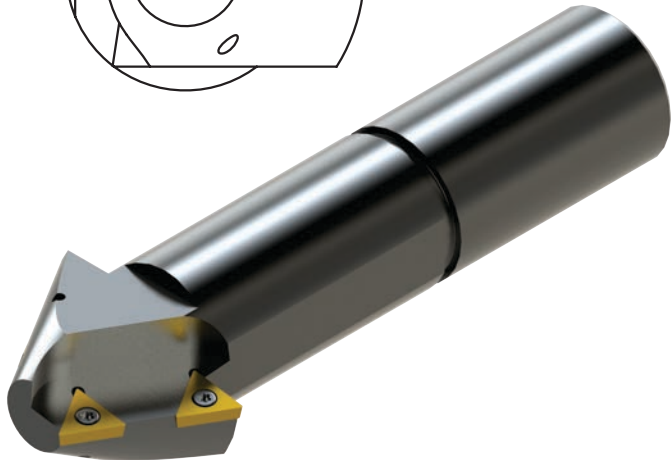
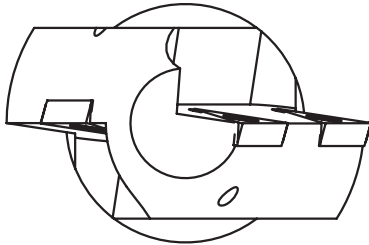
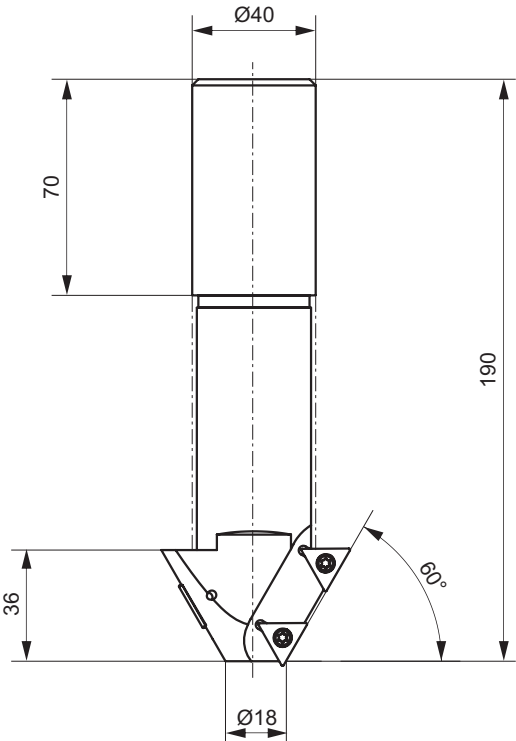


I.e Special tools

CD-R215.8-030-W32.L21

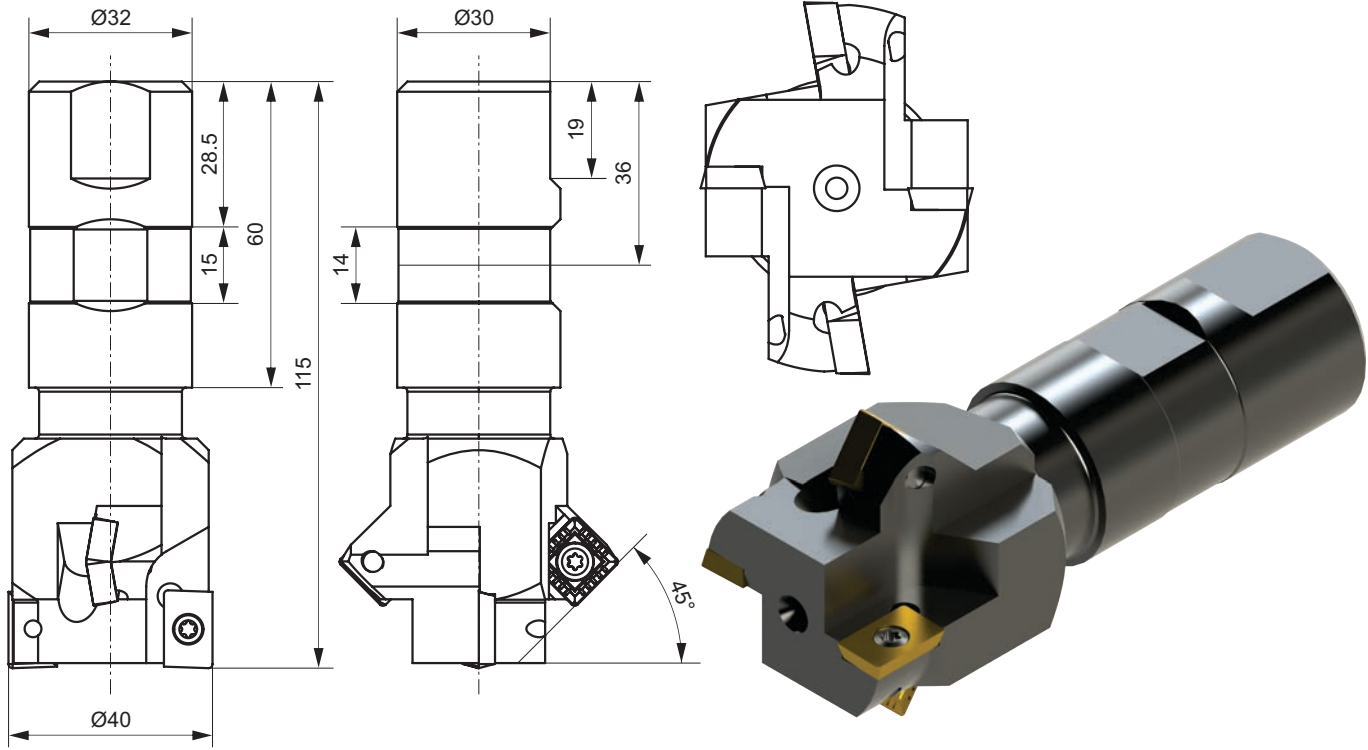


CD-R215.5-019-W40.L38 / CD-R215.3-040-W40.L57

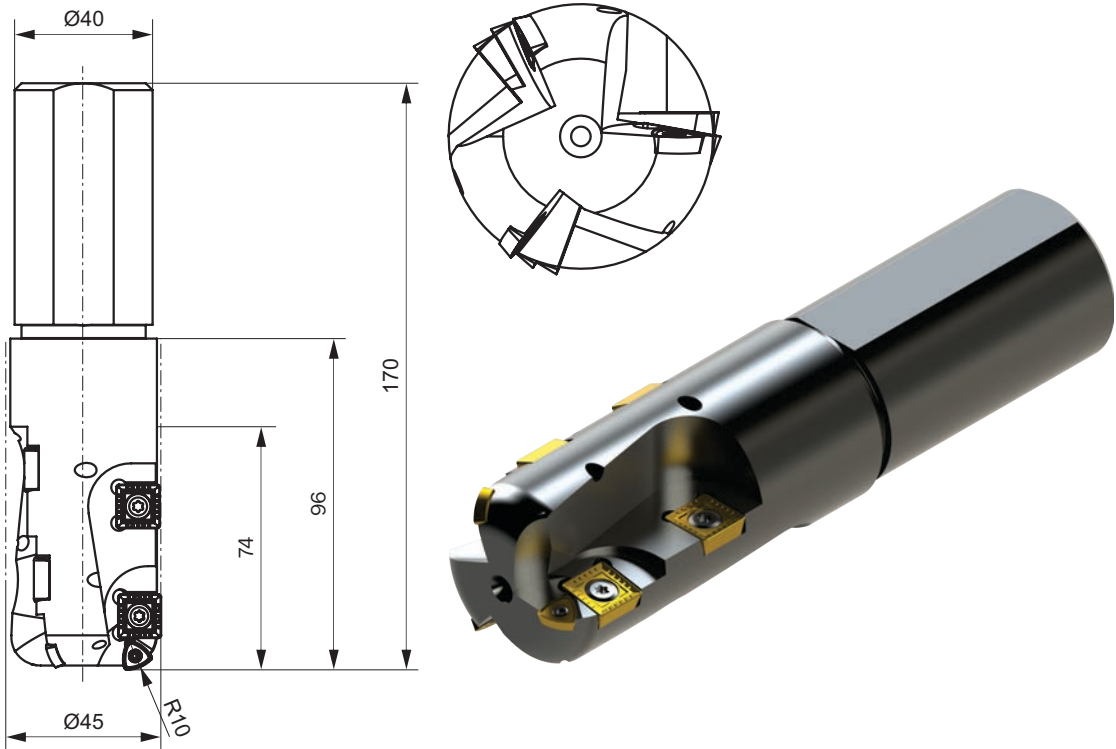


I.e Special tools

CD-S.08.01

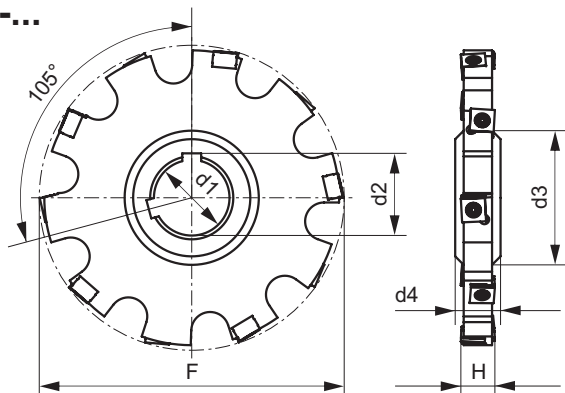


CD-R218.0-045-W40.L74RGL



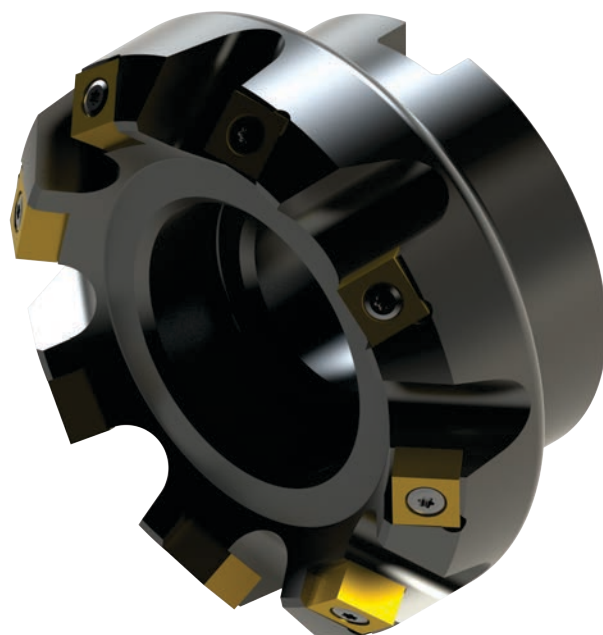
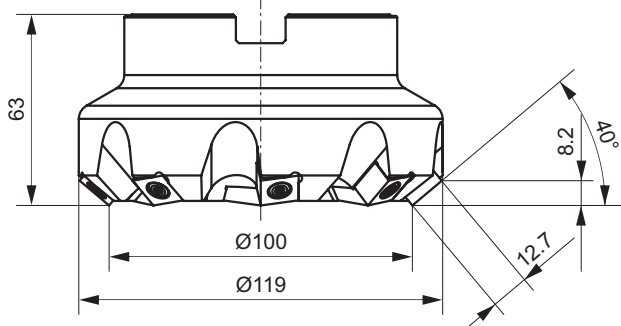
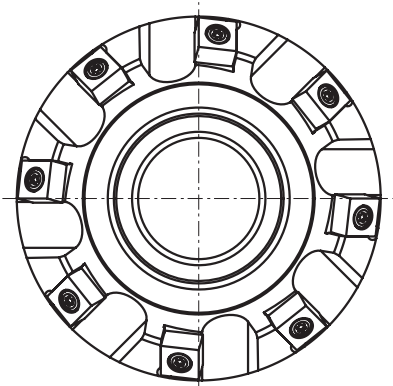
I.e Special tools

CD-31.2-...



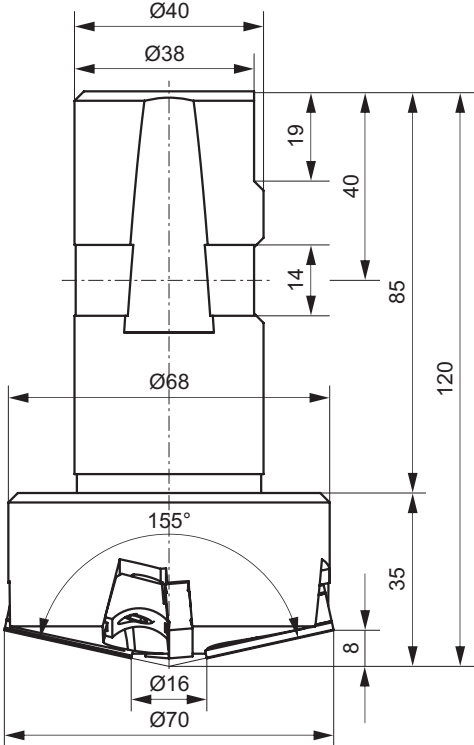
Ordering code	H	F	d1	d2	d3	d4	number of teeth	Screw	pieces	Gauge inserts	pieces
CD-31.2-16018	18	Ø160	Ø40	43.5	67	24	10	M5.0 5513 016-01	10	SNGQ 120700-CD	10
CD-31.2-16020	20	Ø160	Ø40	43.5	65	24	10	M5.0 5513 016-01	10	SNGQ 120700-CD	10
CD-31.2-16022	22	Ø160	Ø40	43.5	62	24	10	M5.0 5513 016-01	10	SNGQ 120700-CD	10
CD-31.2-16024	24	Ø160	Ø40	43.5	66	30	10	M5.0 5513 016-01	10	SNGQ 120700-CD	10
CD-31.2-20018	18	Ø200	Ø50	53.6	81	24	12	M5.0 5513 016-01	12	SNGQ 120700-CD	12
CD-31.2-20020	20	Ø200	Ø50	53.6	79	24	12	M5.0 5513 016-01	12	SNGQ 120700-CD	12
CD-31.2-20022	22	Ø200	Ø50	53.6	76	24	12	M5.0 5513 016-01	12	SNGQ 120700-CD	12
CD-31.2-20024	24	Ø200	Ø50	53.6	80	30	12	M5.0 5513 016-01	12	SNGQ 120700-CD	12

CD-S.09.02

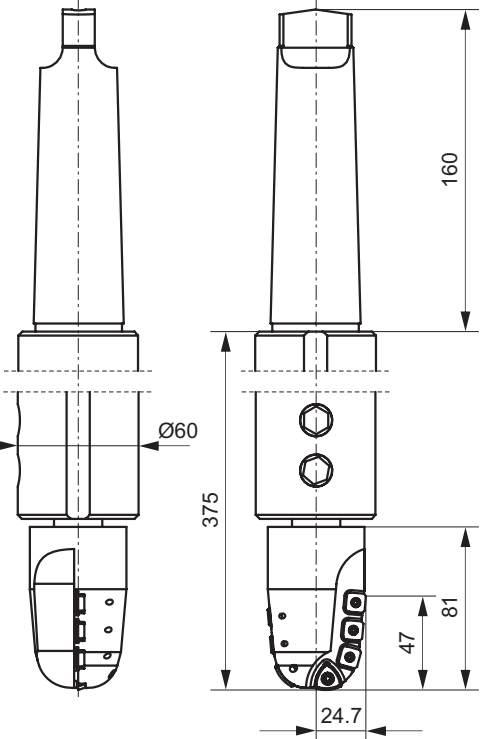


I.e Special tools

CD-S.09.01

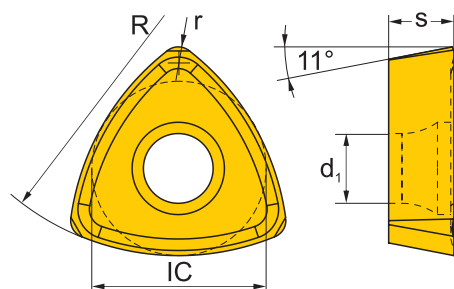
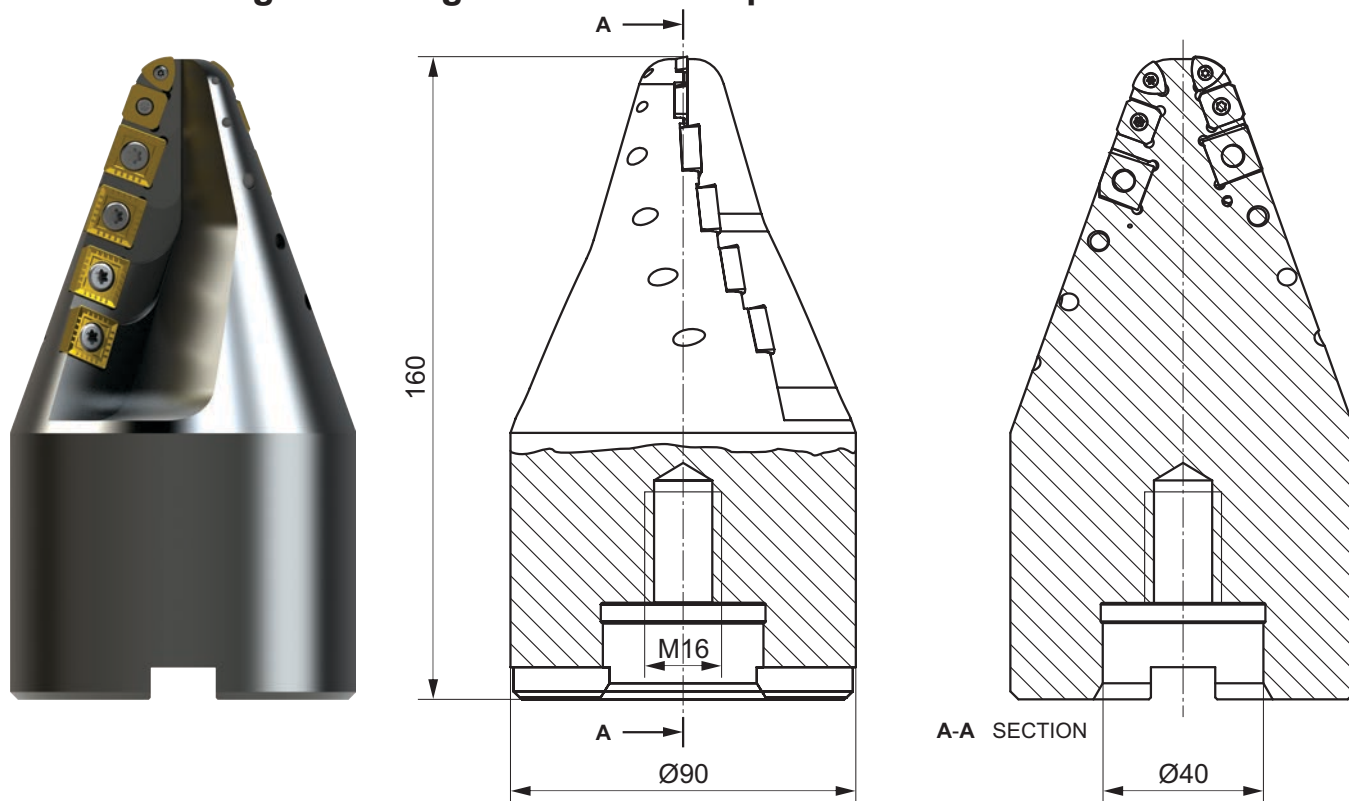


CD-A.09.01



I.e Spindle modul mill / CD-MOD 30-000.J-O40 for cogged lath production

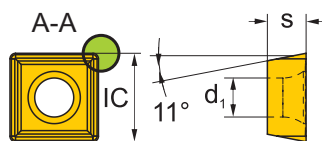
Receiving according to customer requirement



Dimensions	IC	s	r	R	d ₁
10	7.060	2.78	0.8	10.8	2.8

P		M		K		N		S		H																										
CVD	PVD	-	CVD	PVD	-	PVD	-	CVD	PVD	-	CVD																									
2C20 P20	2C25 P25	4C35 P35	4C40 P40	7520 P20	7535 P35	PM P20	P6 P40	2C25 M25	2C35 M35	2C40 M40	7520 M20	7535 M40	P6 M40	2C15 K15	2C25 K25	715 K15	720 K20	7515 K25	7520 K20	K1P K10	K13A K20	7515 N15	7520 N20	K1P N10	K13A N15	K10F N20	2C25 S25	2C35 S35	7520 S20	K13A S15	K10F S20	3C15 H15	4C15 H20	7515 H15	7520 H20	K1P H10

S-MAX U	Ordering code
10	CD-R10



Dimensions	IC	s	R	I	d ₁
9	9.525	3.18	-	1.5	3.4
12	12.700	4.76	0.8	-	5.5



P		M		K		N		S		H																										
CVD	PVD	-	CVD	PVD	-	PVD	-	CVD	PVD	-	CVD																									
2C20 P20	2C25 P25	4C35 P35	4C40 P40	7520 P20	7535 P35	PM P20	P6 P40	2C25 M25	2C35 M35	2C40 M40	7520 M20	7535 M40	P6 M40	2C15 K15	2C25 K25	715 K15	720 K20	7515 K25	7520 K20	K1P K10	K13A K20	7515 N15	7520 N20	K1P N10	K13A N15	K10F N20	2C25 S25	2C35 S35	7520 S20	K13A S15	K10F S20	3C15 H15	4C15 H20	7515 H15	7520 H20	K1P H10

S-MAX	Ordering code
9	SPKX 0903AP
12	SPKX 120408-T

I.e Pharmaceutical industry tools

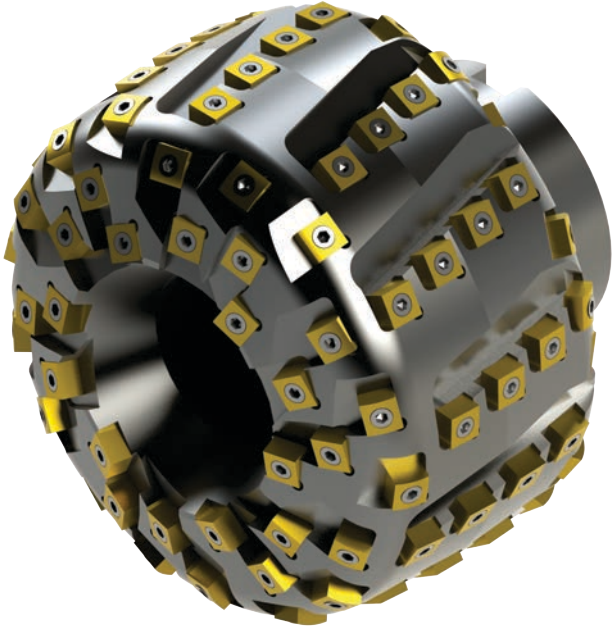
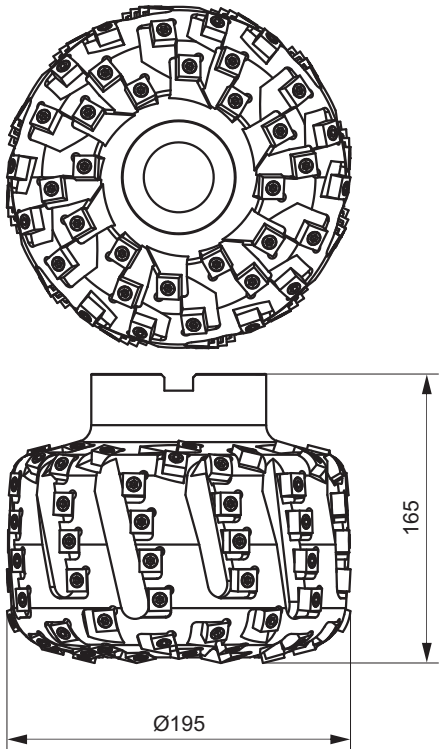
PHARMACEUTICAL INDUSTRY TOOLS

“KILIANI”
“FETTE”
“HORN”

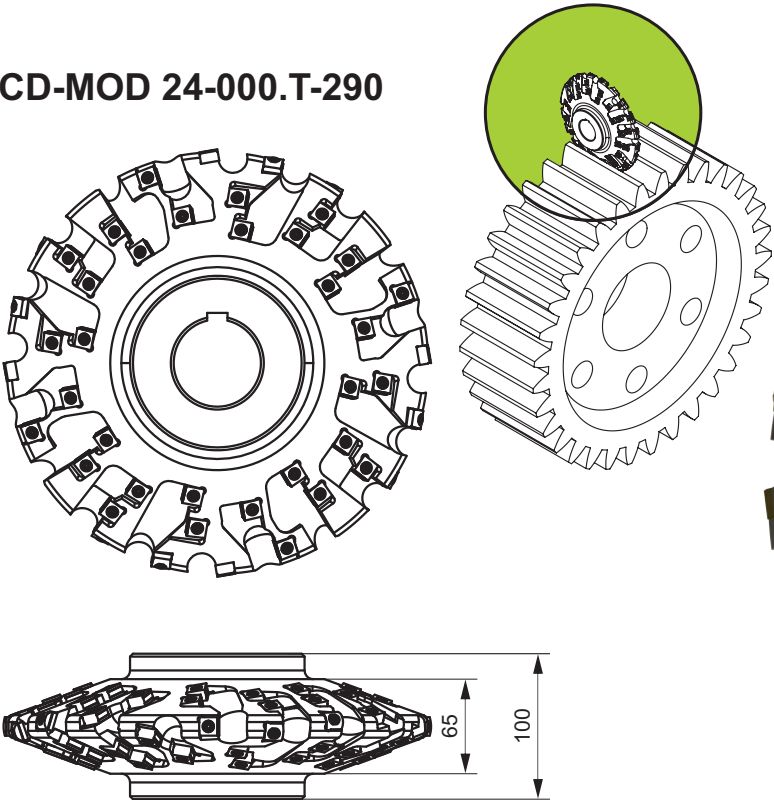


I.e Special tools

D 004.A-08.04



CD-MOD 24-000.T-290



CORUN Coatings

Thin multilayer coatings Layer thickness 5-6µm

CVD

CODE	ISO	COATING LAYERS	RECOMMENDED APPLICATION	Turning	Milling	Parting	Grooving	Threading	Boring
2C15	K20,M25	TiN TiC TiN TiN Al ₂ O ₃ TiCN	Machining of gray and nodular cast iron at medium and high cutting speed	●	●	○	○		
2C20	P20,M25	TiN TiC TiN TiN Al ₂ O ₃ TiCN	For medium roughing and finishing of carbonated steel, gray cast iron and stainless steel	○	●				
2C25	P25,M25	TiN TiC TiN TiN Al ₂ O ₃ TiCN	For finishing and medium rough machining of austenite and stainless steel, at medium cutting speed. Grade is resistant to thermal and mechanical shocks as well as interrupted cutting	●	●				●
2C35	P35,M25	TiN TiC TiN TiN Al ₂ O ₃ TiCN	For finishing and medium rough machining of tough materials at medium cutting speed. Grade is resistant to thermal and mechanical shocks as well as for interrupted cutting	●	●	●	●		
2C40	P40,M40	TiN TiC TiN TiN Al ₂ O ₃ TiCN	Very tough grade for machining of abrasive stainless steel	●	●	●	●		○

Thick multilayer coatings Layer thickness 12-18µm

CVD

3C15	P10,K15	TiN TiC TiN TiN Al ₂ O ₃ TiCN	Best choice for machining of all types of cast iron at low and medium cutting speed. Especially good for interrupted cutting	●	○				
4C15	P15,K15	TiN TiC TiN TiN Al ₂ O ₃ TiCN	For finishing and medium machining of: steel, cast steel, gray and nodular cast iron under all conditions of operation. Perfect for usage with cooling emulsion in P15 application field	●					
4C25	P25,K25	TiN TiC TiN TiN Al ₂ O ₃ TiCN	For medium and rough machining of steel and cast steel with large chips and unfavorable cutting conditions. Very good for use in P25 application field as well for stainless steel and gray cast iron	●		○	○		
4C35	P35	TiN TiC TiN TiN Al ₂ O ₃ TiCN	For medium and finishing of cast stainless steel. Good resistance against heating and interrupted cutting. High toughness and resistance against plastic deformation. Excellent for work under the hard conditions in P35 application field	●					
4C40	P40	TiN TiC TiN TiN Al ₂ O ₃ TiCN	For machining of stainless steel at low cutting speed under the hard machining conditions	●					

PVD

CODE	ISO	COATING LAYERS	LAYER THICKNESS	RECOMMENDED APPLICATION	Turning	Milling	Parting	Grooving	Threading	Boring
515	P15,M15 K15	TiN	1-2µm	Universal grade for different materials					○	○
520	P20,M20 K15	TiN	1-2µm	For low carbonated steel with medium cutting speed		○			●	●
620	P40,M20	TiCN	2-3µm	For boring of wide range of materials						●
635	P25,M25	TiCN	2-3µm	For machining of stainless steel and heavy turning at high cutting speed. For milling of wide range of materials	●	○				
715	P15,K15 M15	TiAIN	2-3µm	For turning of austenite stainless steel at high cutting speed	●	●			○	
720	P15,M20 K25,N	TiAIN	2-3µm	For machining of heat resistant alloys and austenite stainless steel at medium and high speed under unfavorable work conditions	○	●	●			○
735	P40	TiAIN	2-3µm	For milling of stainless steel under the hard work conditions		●				
6515	M25,S15	TiN TiCN	4µm	For stainless steel, heat resistant alloys and hard materials				●		
6520	P20,M20 N,S,H	TiN TiCN	4µm	For milling of steel and cast steel	○	●				
6535	P35,M35 K35	TiN TiCN	4µm	For all types of materials at mild operation conditions					●	
7515	M15	TiN TiAIN	4µm	For machining of stainless steel at medium cutting speed			○	○		
7520	P30,M25 K30,S,H	TiN TiAIN	4µm	Universal grade for many kind of materials	○	○	●	●	●	○
7535	P45,M40	TiN TiAIN	4µm	For hard operating conditions at lower speed	○	○	○	○		●

● First priority ○ Second priority

J.a Inserts index list

CODE	PAGE	CODE	PAGE
B		D	
B-C-04.14.00	H / a1	DCMT-UR	A / b3
B-C-04.15.00	H / a1	DCMW	A / b3
BG-154.91	B / a4	Dies for drawing of wires	I / c1
BPKX	E / a2	Dies for nail	I / d1
		Dies for straightening of wires	I / c1
C		DNMA	A / a4
C1-00	G / a2	DNMG-15	A / a5
C1-01	G / a2	DNMG-61	A / a5
C1-02	G / a2	DNMG-CF	A / a5
C2-00	G / a2	DNMG-CM	A / a5
C2-01	G / a2	DNMG-CR	A / a5
C2-04.12.00	H / a1	DNMM-71	A / a4
C2-04.13.00	H / a1		
C2-04.14.00	H / a1	F	
C2-04.15.00	H / a2	Forging dies	I / d1
C2-07.36.00	H / a2		
C3-00	G / a3	G	
C4-00	G / a3	G26-TS	G / a4
C4-01	G / a3		
C7-00	G / a3	H	
C7-01	G / a3	HPHN	E / a3
C7-02	G / a4	HPHN-SP	E / a3
C9-00	G / a4		
CCMT-UF	A / b2	K	
	E / a2	KNUX	A / c2
	E / d2	KNUX-L25	A / c2
CCMT-UR	A / b2		
CCMT-W	A / b2	L	
CCMW	A / b2	L154.91	B / a4
CD-2000-004-00	I / a2	LCMX-53	F / a2
CD-2000-005-00	I / a2		F / b1
CD-R	E / a3	LNCX	E / a4
	E / f2	LNUX-22	D / a2
	I / e1	LNUX-23	D / a2
	I / e8	LNUX-CD	D / a2
CNMA	A / a2	LPUC	I / b1
CNMG	A / a3	LPUG	I / b1
CNMG-15	A / a3		
CNMG-61	A / a3		
CNMG-CF	A / a3		
CNMG-CM	A / a3		
CNMG-CR	A / a3		
CNMM	A / a2		
CNMM-71	A / a2		
CNMM-CR	A / a2		
CNMM-HR	A / a2		

J.a Inserts index list

CODE	PAGE	CODE	PAGE
SNUX	I / a1	TNMG-15	A / a10
SOUX	I / a1	TNMG-61	A / a10
SPAN	E / a11	TNMG-CF	A / a10
	E / b7	TNMG-CM	A / a10
SPEX	E / a11	TNMG-CR	A / a10
	E / b7	TNMM	A / a11
SPGN	A / c3	TNMM-71	A / a11
SPGN-S	A / c3	TNUF	D / a4
SPGN-T13	A / c3	TNUN	A / c5
SPGR	A / c3	TNUX-R14	A / a11
SPGT	E / a12	TPAN	E / a13
	E / f2		E / e5
SPKN	E / a11		E / e7
	E / b7	TPGN	A / c6
SPKR-WH	E / a11	TPGR	A / c7
	E / b7	TPGR-21	A / c7
SPKX	E / a12	TPGX	E / a13
	E / d3		E / f4
	E / f2	TPKN	E / a14
	I / e8		E / b3
SPKX-T	E / a12	TPKR-WH	E / a14
	E / b10		E / b3
	E / b11	TPKW	E / a14
	E / d4	TPMN	E / a14
	E / f2		E / b3
	I / e1	TPMR	A / c7
	I / e8	TPUN	A / c6
SPMN	E / a11	TR-87-07-00	D / a4
	E / b7		
SPMR	A / c4	V	
SPMT	E / a12	VBMT-UR	A / b6
SPMW	E / a12	VNMA	A / a12
SPUN	A / c4		
SPUN-S	A / c4	W	
SPUN-T	A / c4	WCMX-53	F / a2
T			F / b2
TCMT-UF	A / b5	WMMG-QM	A / a12
TCMT-UR	A / b5	WNMG-CFM	A / 12
TCMW	A / b5	WNMG-CM	A / a12
TI-15.1NR	C / a3	WNMG-CR	A / a12
TI-22.1ER	C / a3	WNUM	A / a13
TNAN	E / a12		
TNGN	A / c5		
TNGN-T13	A / c5		
TNGN-T24	A / c5		
TNHN	E / a12		
TNMA	A / a9		
TNMG	A / a10		

J.a Inserts index list

CODE	PAGE
X	
XDGW	E / a15 E / c2 E / d3
XPMT-R	E / a15 E / b9 E / d4
Z	
ZDCW	E / a16
ZNGF	I / b1
ZNGF-6F	I / b1
ZPCW	E / a16

J.a Tools index list

CODE	PAGE	CODE	PAGE
A		CD-217.8	E / b11
A 07.00.14.00	H / b2	CD-MOD 24-000.T-290	I / e10
		CD-MOD 30-000.J-O40	I / e8
		CD-R.416.2	F / b1
			F / b2
C		CD-R214.2	E / b9
C51.2	B / b5		E / c2
	B / b6	CD-R215.3-040-W40.L57	I / e4
	H / b2	CD-R215.5-019-W40.L38	I / e4
CD A.SP.05.03 07	H / b1	CD-R215.8-030-W32.L21	I / e4
CD-114.OK41.32	G / c2	CD-R217.3	E / b10
CD-1709-C7-21	G / c3	CD-R217.8	E / b11
CD-1712-C2-22	G / c2	CD-R218.0	E / f3
CD-1716-C1-24	G / c1	CD-R218.0-045-W40.L74RGL	I / e5
CD-1719-C1-01	G / c1	CD-R218.2	E / f3
CD-1719-C1-06	G / c1	CD-RGL	E / f2
CD-1719-C1-11	G / g1	CD-RGL-SP	E / f4
CD-719K-C2-14W	G / c2	CD-S.015.000.02	H / b5
CD-1722-C1-23	G / e1	CD-S.08.01	I / e5
CD-2012-C2-09	G / e1	CD-S.09.01	I / e7
CD-2019-C1-05	G / e1	CD-S.09.02	I / e6
CD-2019-C2-04	G / e2	CD-S.09.03	I / e3
CD-2518-C4-08	G / d1	CD-SCF-10320	H / b3
CD-3022-C3-25	I / e6	CH-G.001.002	I / e1
CD-31.2	G / f1	CSBPR/L	A / f2
CD-3219-C1-03	G / d2	CSDPN	A / f2
CD-3318-C4-12	G / f1	CSDPR/L	A / f2
CD-3319-C1-02	G / d2	CSKPR/L	A / f3
CD-3322-C3-02	H / b3	CSTPR/L	A / f2
CD-36.150.73.US	H / b1	CTBPR/L	A / f4
CD-38.12.16	G / d1	CTDPR/L	A / f4
CD-3822-C3-07	G / d1	CTFPR/L	A / f3
CD-3825-C4-10	H / b1	CTGPR/L	A / f4
CD-42.12.16	G / d2	CTTPR/L	A / f4
CD-5225-C4-12	H / b4		
CD-65-M42-130	I / e7	D	
CD-A.09.01	E / d2	D 004.A-08.04	I / e10
CD-KU20	E / d2		
CD-KU22	E / d2		
CD-KU25	E / d2	G	
CD-KU28	E / d2	G30.20	E / e2
CD-KU32	E / d3	G31.2	E / e4
CD-KU36	E / d3		
CD-KU40	E / d4		
CD-KU45	E / d4		
CD-KU50	E / d4		
CD-KU56	E / d4		
CD-KU63	E / d4		
CD-KU80	E / d4	L	
CD-L217.3	E / b10	LG31.4	E / e6

J.a Tools index list

CODE

PAGE

M

MR290L-C200R062N12-R23-355	I / e3
MTGNR/L	A / d6
MTJNR/L	A / d6

P

PCBNR/L	A / d2
PCLNR/L	A / d2
PDJNR/L	A / d3
Pharmaceutical industry tools	I / e9
Pikamer 040	H / b4
PRGCR/L	A / d3
PRGNR/L	A / d3
PSBNR/L	A / d4
PSDNN/L	A / d4
PSKNR/L	A / d4
PSSNR/L	A / d4
PTDNR/L	A / d5
PTENN	A / d6
PTFNR/L	A / d5
PTGNR/L	A / d5
PTTNR/L	A / d5
PWLNLR/L	A / d7

R

R S31.9	I / a2
R/L 154.91	B / b4
R/L 175.32	D / b2
R/L 177.32	D / b2
R/L S36.9	A / i2
R/LFC51.22	B / b2
R/LFC51.23	B / b3
R/LS70.35	A / d3
R/LS70.5	A / f5
R/LS71.5	A / f5
RG.CD260	E / b8
RG31.4	E / e6
RG62.2	E / b2
RG65.1	E / b4
RG65.2	E / b6
RS66.OFG	C / b1
RS66.OFK	C / b1

CODE

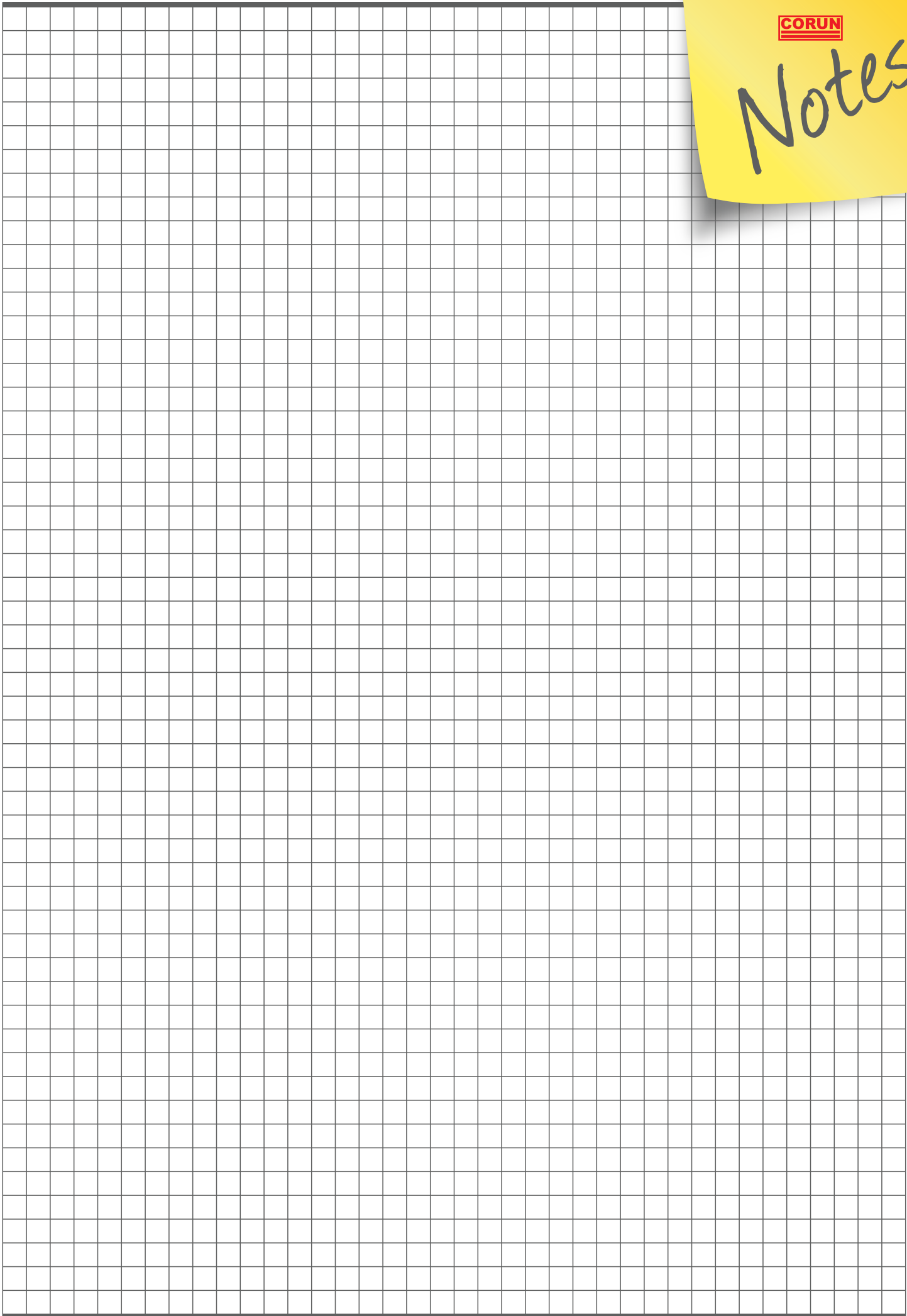
PAGE

S

S08K-SCLCR/L	A / h2
S10K-STFCR/L	A / h3
S12M-CTFPR/L	A / i2
S12M-SCLCR/L	A / h2
S12M-STFCR/L	A / h3
S16R-SCLCR/L	A / h2
S16R-SSKCR	A / h3
S16R-STFCT/L	A / h3
S16R-SVQBR/L	A / h4
S20S-SCLCR/L	A / h2
S20S-SSKCR/L	A / h3
S20S-STFCR/L	A / h3
S20S-SVQBR/L	A / h4
S25T-PCLNR/L	A / g2
S25T-PDUNR/L	A / g2
S25T-SCLCR/L	A / h2
S25T-SPKNR/L	A / g3
S25T-SSKCR/L	A / h3
S25T-STFCR/L	A / h3
S25T-SVQBR/L	A / h4
S32U-CKUNR/L	A / i3
S32U-PCLNR/L	A / g2
S32U-PDUNR/L	A / g2
S32U-PSKRN/L	A / g3
S32U-SCLCR/L	A / h2
S32U-SSKCR/L	A / h3
S32U-STFCR/L	A / h3
S32U-SVQBR/L	A / h4
S40S-PSWNR	C / b2
S40V-PCLNR/L	A / g2
S40V-PDUNR/L	A / g2
S40V-PSKNR/L	A / g3
S40V-SCLCR/L	A / h2
S40-STFCR/L	A / h3
S40V-SVQBR/L	A / h4
S40W-CKUNR/L	A / i3
S50W-PCLNR/L	A / g2
S50W-PDUNR/L	A / g2
S50W-SKNR/L	A / g3
SCLCR/L	A / e2
SDJCR/L	A / e2
SDNCD	A / e2
Special cutter for rail and locomotive wheels reparation	I / e2
SSDCN	A / e3
SSDCR/L	A / e3
STFCR/L	A / e3
STGCR/L	A / e3
SVJBR/L	A / e4
SVVBN	A / e4

CORUN

Notes



CORUN HOLDING d.o.o.

Miloša Obrenovića, Suite 2
Užice, Serbia 31000

phone: +381 31 / 563 344
fax: +381 31 / 563 461
e-mail: corunad@yahoo.com

SALES DEPARTMENT

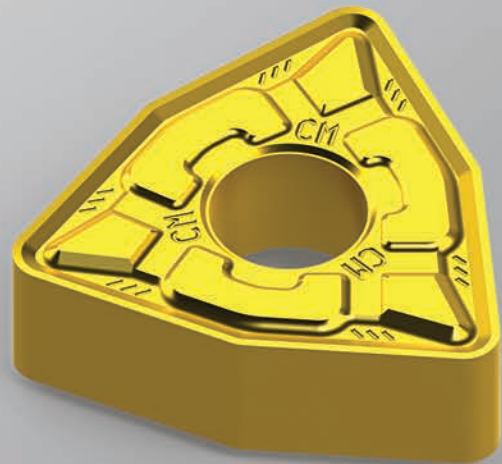
phone: +381 31 / 563 391
fax: +381 31 / 563 391
e-mail: sales@corun.rs

MARKETING

phone: +381 31 / 563 391
fax: +381 31 / 563 391
e-mail: marketing@corun.rs

DEVELOPMENT

phone: +381 31 / 563 400
e-mail: development@corun.rs



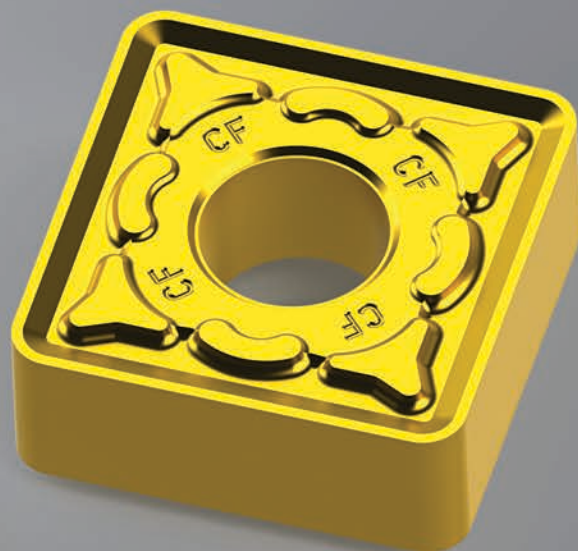
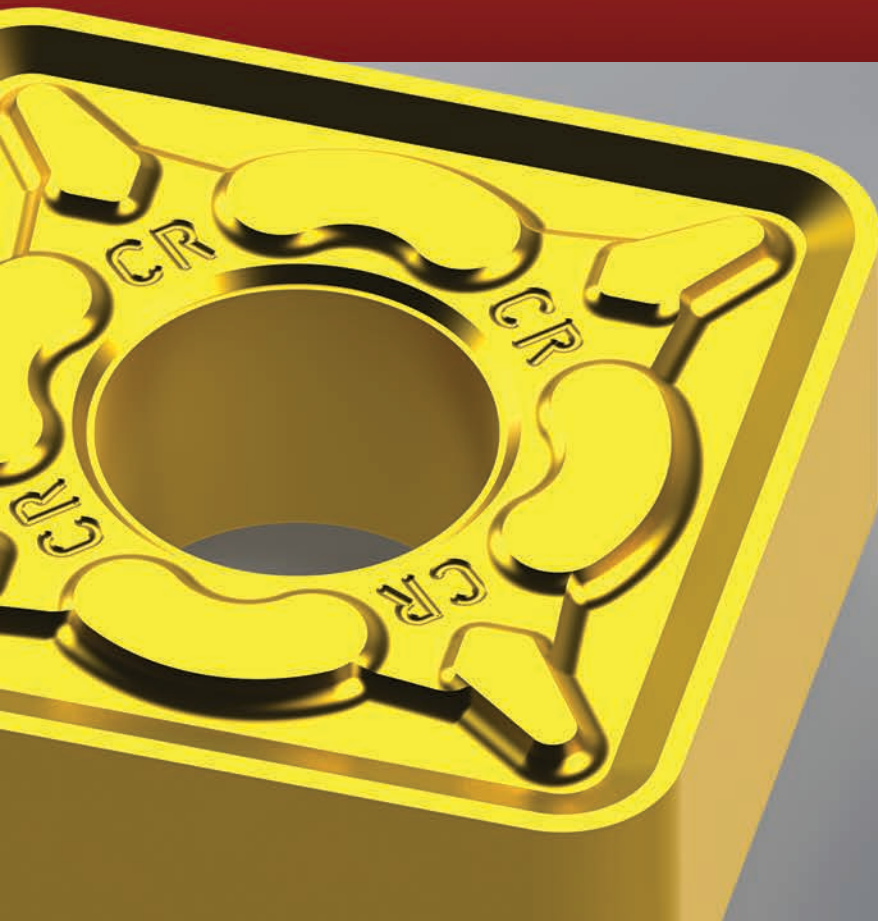
ABOUT COMPANY

CORUN HOLDING d.o.o. Užice, Serbia is factory for production of cemented carbide indexable inserts, toolholders, milling cutters and other special cutting tools based on cemented carbide.

Also, we produce tools for road and mining industry (picks for asphalt removing, cutters for canal digging, mining drill for deep hole drilling), as well as tools for cold heading and forming (cemented carbide dies for forging, pulling, squeamishing - all with corresponding pins).

CORUN HOLDING d.o.o has their own development and construction bureau, so we have a opportunity to give our customers complete technological answers for all problems in cutting industry.

One of the main target of **CORUN HOLDING** d.o.o. company is to be available all the time for our customers worldwide and to respond on all of Yours requests as soon as possible in order to make the best solutions together.



CORUN

WWW.CORUN.RS